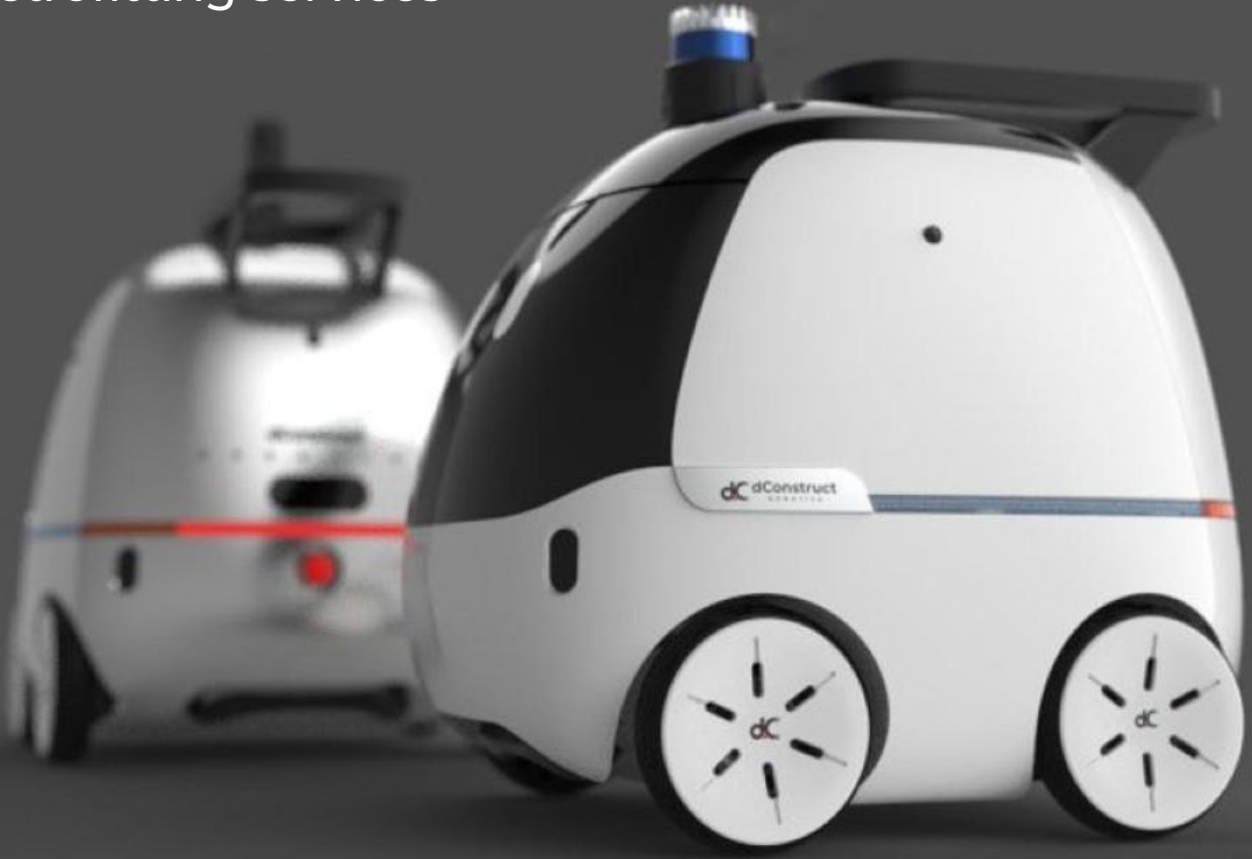
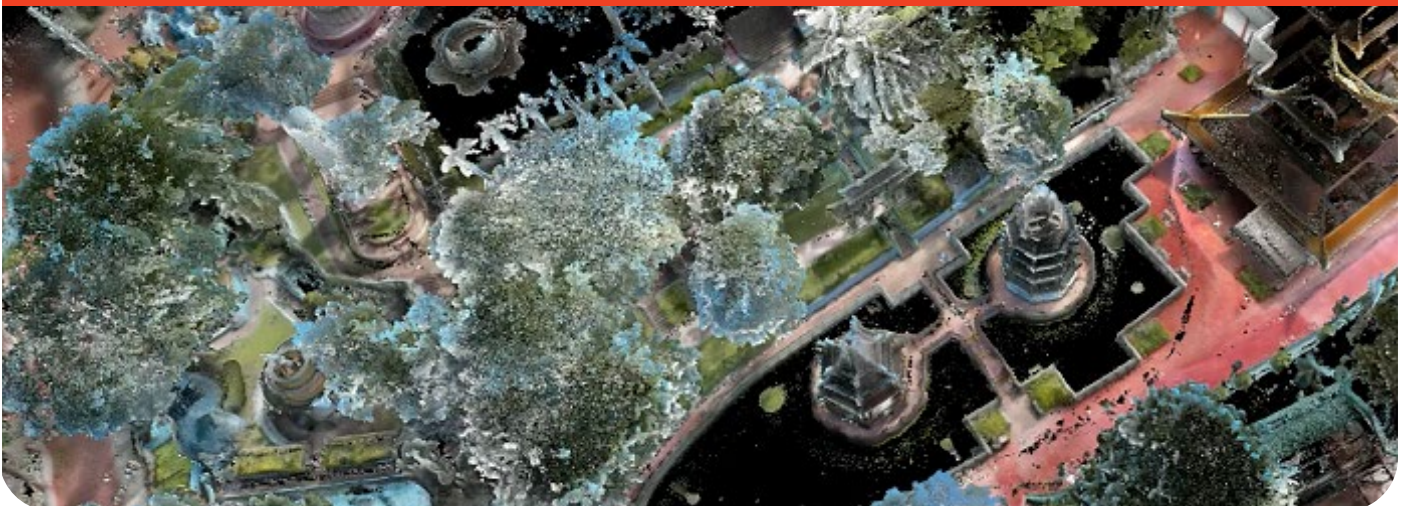


Purpose-built robot
and third-party
robot navigation
retrofitting services



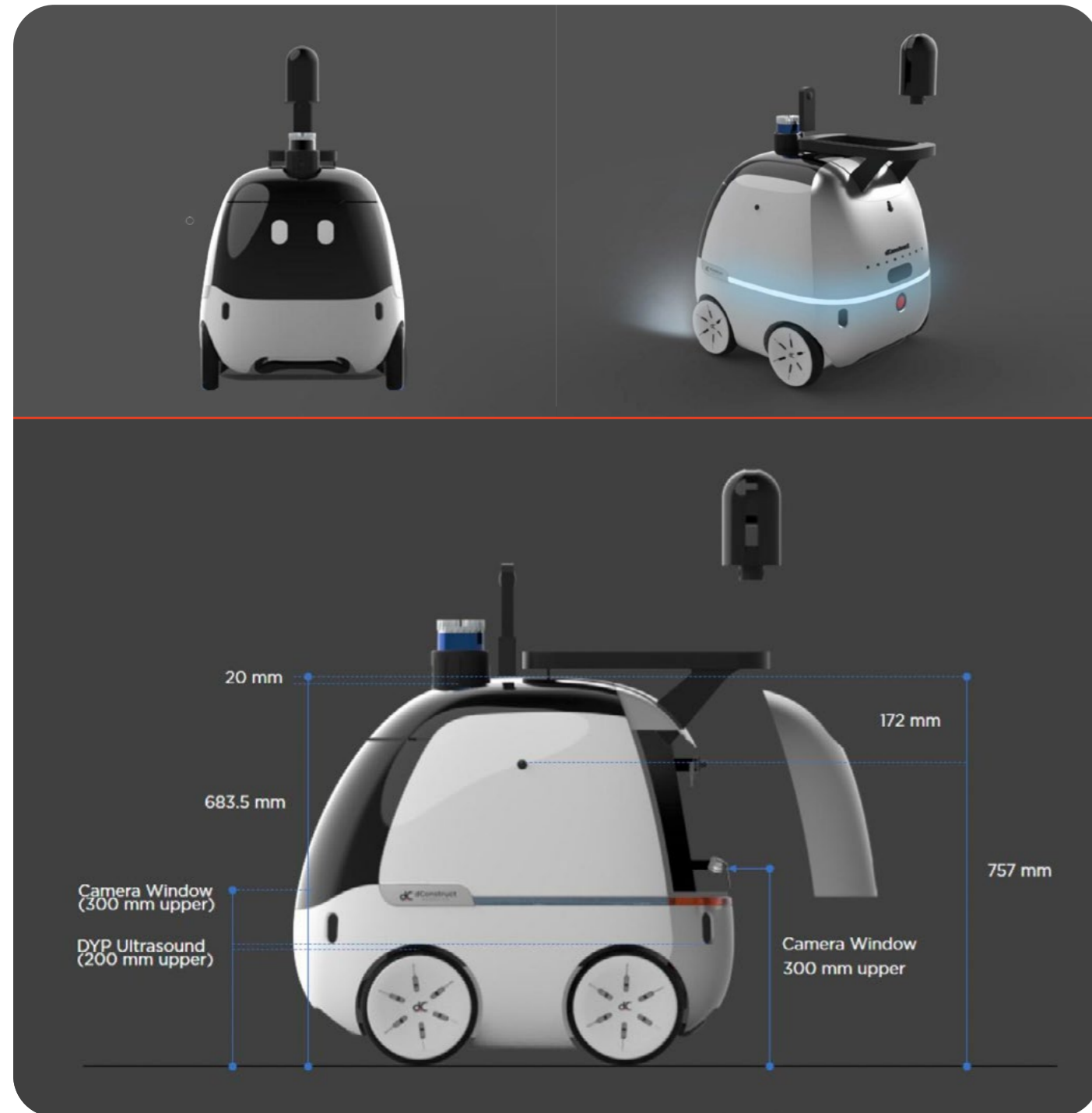
d.ASH-ER



d.ASH-ER

Introducing d.ASH-ER, the purpose-built robot that performs multiple functions. Its advanced sensors and cameras inspect and monitor environments, identify potential issues, efficiently transport goods and supplies with care and precision.

Its friendly demeanor and interactions make it an ideal addition to any office or building, enhancing the overall customer experience. With its sleek design and advanced capabilities, d.ASH-ER streamlines processes, increases productivity, and enhances the customer experience.



Last-mile Delivery

Improve last mile delivery by reducing delivery times, increasing efficiency, and reducing the need for human intervention. d.ASH-ER with state of art navigation software, delivers accurately and safely.

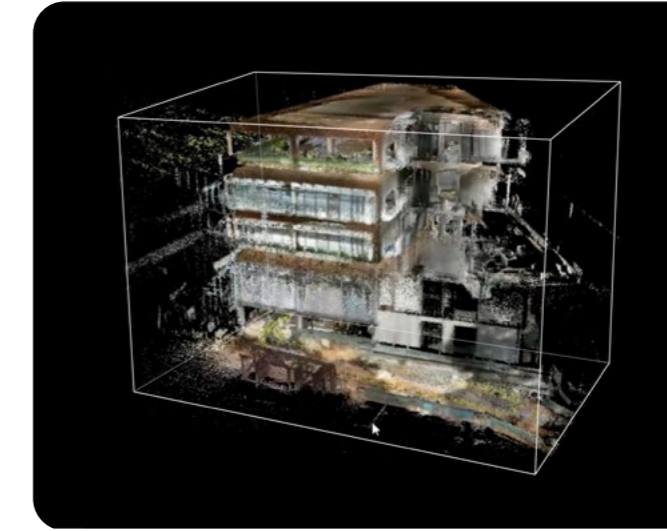
Safety & Security

d.ASH-ER equipped with cameras and sensors can improve safety and security by providing enhanced capabilities of inspection, detection and response to various threats and emergencies.

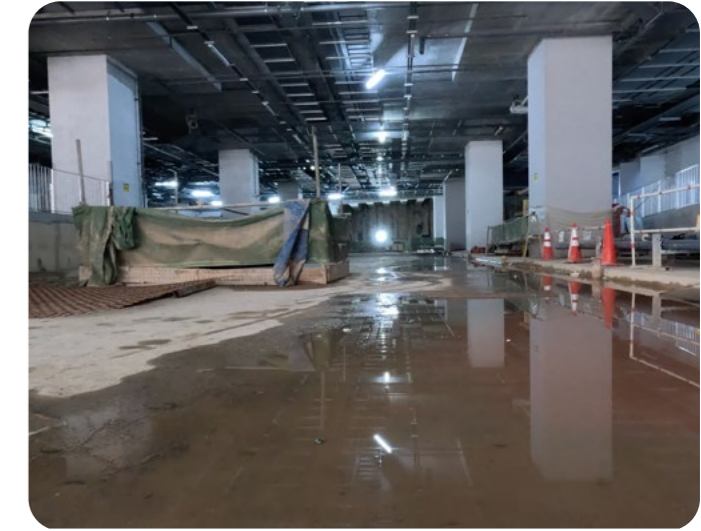
Mapping on-the-go

Reality capture on-the-go enables robots to adapt to changing environments, avoid obstacles, and perform tasks such as management and inspection. It's ideal for industries with constantly changing environments where quick, accurate decision-making is crucial for efficient operations.

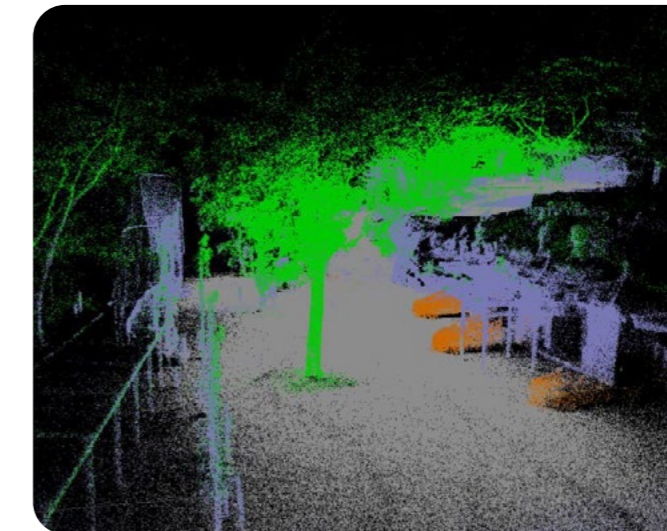
FEATURES



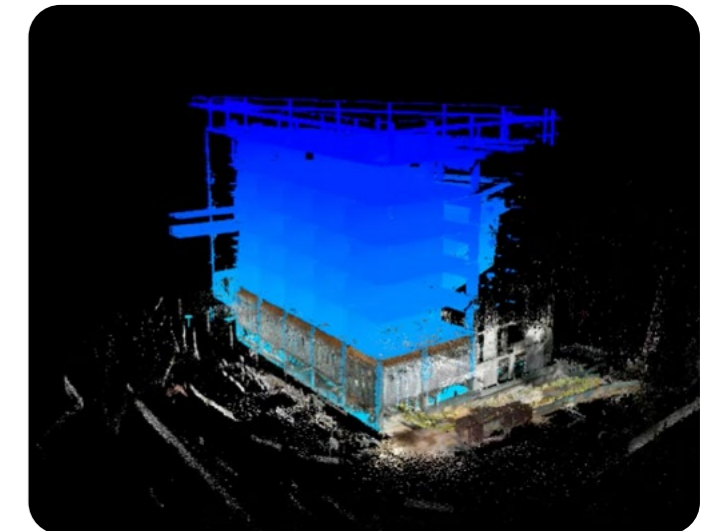
Volumetric Measurement



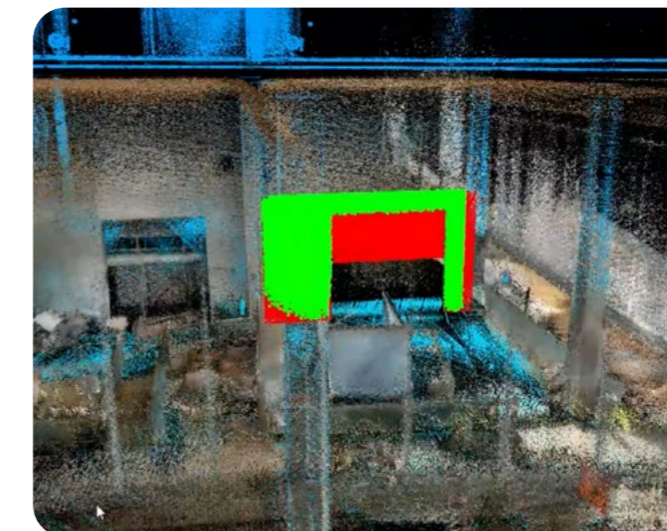
Live Streaming



Object Segmentation



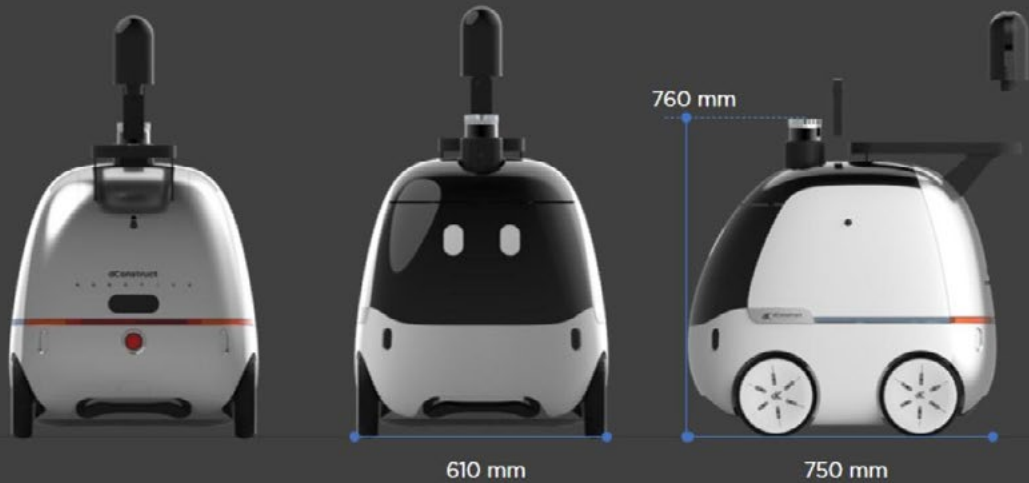
Change Detection



Compare with BIM



Follow-Me Feature (Option)



Core Specifications

Weight: 35kilograms

Operation Hour: 5Hours

SPEED

Speed: Up to 1m/s

Rated Travelling Load: 10kg

POWER REQUIREMENTS

Voltage: 220V AC

Charging Time: 3.5Hr

Battery: 48V 15Ah

Power Output: 500W

Charging Input: 220VAC/300W

Motion: Differential Wheeled Robot

Remote Control: 2.4GHz ISM, distance $\leq 200\text{m}$

SAFETY

Water Resistance: IP52

Emergency Stop Buttons: 1

Collision: Front+rear anti-collision rod

Communication Interface: RS232



dConstruct Robotics
10 Central Exchange Green #03-01
PIXEL Singapore 138649

 For more information, please contact +65 6100 5328 | hello@dconstruct.group | dconstruct.co